

## S.M. WRIGHT PROJECT - CONCEPT DOCUMENT

The Texas Department of Transportation (TxDOT) is undertaking design plans and environmental studies for improvements to US 175 / SM Wright Freeway. The study area is shown at left and includes improvements to I-45 from SM Wright Freeway (US 175) to south of Lamar Street (1.7 miles); S. M. Wright Freeway from I-45 to SH 310 near Budd Street (2.5 miles); and providing direct connecting (DC) ramps between C. F. Hawn Freeway (US 175) and I-45 (1.5 miles). The S. M. Wright Project would increase mobility and improve safety by eliminating the accident prone C. F. Hawn Freeway to S. M. Wright Freeway curve.

### RECOMMENDATIONS:

#### S. M. WRIGHT PHASE I (Formerly Trinity Parkway Phase I)

Construct new direct-connecting ramps from C. F. Hawn Freeway to I-45, and widen I-45 to the inside from Lamar St. to the S. M. Wright Freeway ramps. The direct-connecting ramps provide allowance for a potential future connection from Trinity Parkway under study by the NTTA.

#### S. M. WRIGHT PHASE II (Existing S. M. Wright Reconstruction)

Reconstruct S. M. Wright from I-45 to Budd St. as a low speed, landscaped six (6) lane arterial.

#### S. M. WRIGHT PHASE IIB

Add a new NB I-45 exit ramp and a new SB I-45 entrance ramp to and from Grand Ave. Extend the I-45 frontage roads to MLK Blvd. Reconstruct S. M. Wright from Pennsylvania Ave. to Cesar Chavez Blvd. at Grand Ave.

### S. M. WRIGHT PROJECT STATUS

**Phase I and II Project Cost:** \$151.6 M

**Phase IIB Project Cost:** TBD

**Funding:** Local and Regional officials have prioritized programming and funding of the C. F. Hawn-to-I-45 ramps in order to accelerate the S. M. Wright construction, with \$151 M anticipated from RTR, STP-MM, Cat. 2 & other funding sources.

**Environmental Assessment:** Phase I and II complete; Phase IIB underway.

**Environmental Clearance:** Phase I and II completed Sept. 2013; Phase IIB expected January 2016.

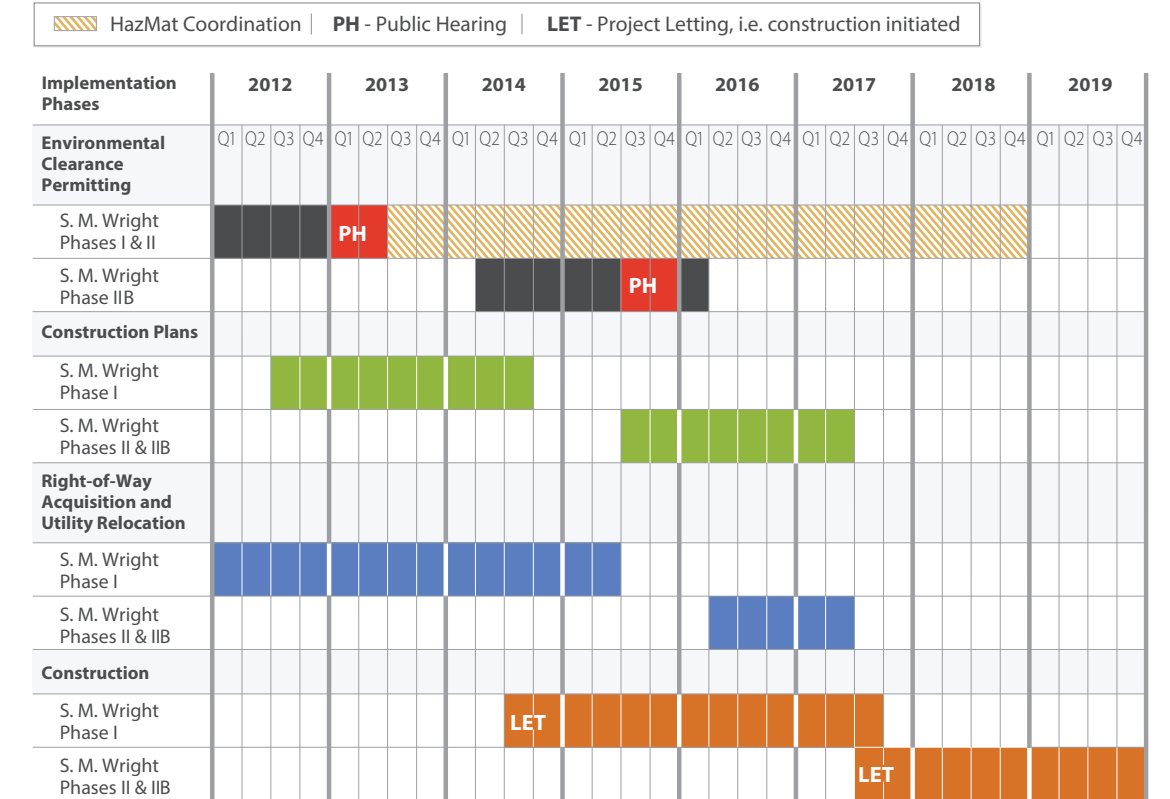
**PS&E:** 100% complete (S. M. Wright Phase I only)

**S. M. Wright Phase I Letting:** Sept. 2014

**S. M. Wright Phase II and IIB Letting:** August 2017

### OVERALL SCHEDULE

**S. M. WRIGHT PHASE I (Formerly Trinity Parkway Phase 1), (IH45 and U.S. 175 Connectors) AND S. M. WRIGHT PHASE II (Existing S. M. Wright Reconstruction)**



Website: [www.smwrightproject.org](http://www.smwrightproject.org)

**Dallas District Office**  
4777 E. Highway 80  
Mesquite, TX 75150

### S. M. WRIGHT PHASE IIB ESTIMATED PROJECT DEVELOPMENT TIMELINE

