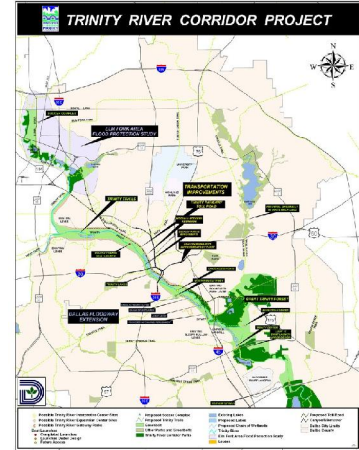


# The Trinity River Corridor Project Update

Councilmember Carolyn A. Davis  
Community Meeting  
October 14, 2008



The project covers 20 miles of the Trinity River, approx. 10,000 acres



## Trinity River Corridor Project: An Overview



This project addresses a number of regional concerns, though **flood protection** remains the **essential cornerstone** of this multi-faceted effort. The five inter-related components of the project are:

- Flood Protection
- Environmental Management
- Recreation
- Transportation
- Community/economic development



3

## Background



## Timeline



- May 1998 – Proposition 11 for the Trinity River Corridor Project passes
- November 1998 – Master Planning for the Trinity River Corridor Project begins
- January 1999 – Agreement between NTTA, City and TxDOT regarding Trinity Parkway
  - Environmental Impact Statement (EIS) begins
- December 1999 – Corps EIS is complete (started in 1990); Master Implementation Plan is adopted by Council



5

## Timeline



- August 2002 – Mayor Miller organizes private effort to reexamine the previous Master Plan (adopted in December 1999) and roadway
- September 2002 – Court injunction against the Corps wetlands project halts construction for 2 years
- December 2003 – Council adopts “Balanced Vision Plan” which provides new concepts for lakes, park areas and roadway



6

## Current Activities Flood Protection



## Why do we need flood protection?



- During the flood of 1908, the Trinity River was 50 ft. deep and a mile wide
- This was a 100 year flood event – and it occurred 100 years ago!



8

## Why do we need flood protection?

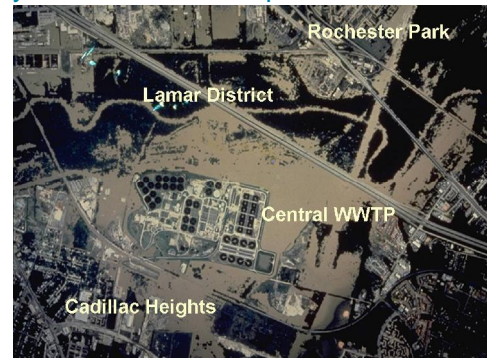


Flood of 1990



9

## Why do we need flood protection?



Flood of 1990



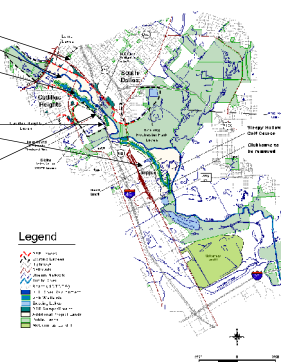
10

## Flood Protection: Dallas Floodway Extension



- Levees
- Upper chain of wetlands
- Lower chain of wetlands
- River relocation
- Recreation and mitigation (throughout forest)

DALLAS FLOODWAY EXTENSION (DFE) PROJECT



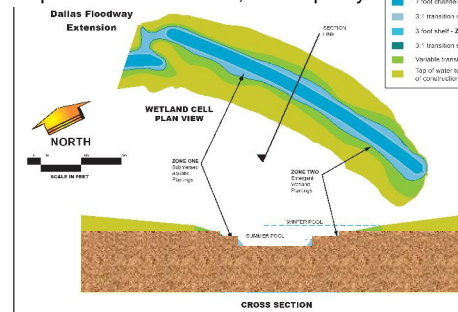
Legend

## What is a wetland cell?

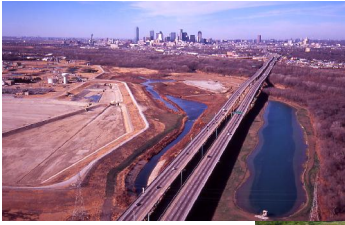


- A shallow pool with tiered edges
- Used for flood conveyance in the forest
- Also improves wildlife habitat, water quality

LEGEND



## Flood Protection: Lower Chain of Wetlands



Cell "D", at IH-45 and Overton Rd.

Cell "G", former site of Sleepy Hollow Golf Course



## Flood Protection: Lower Chain of Wetlands

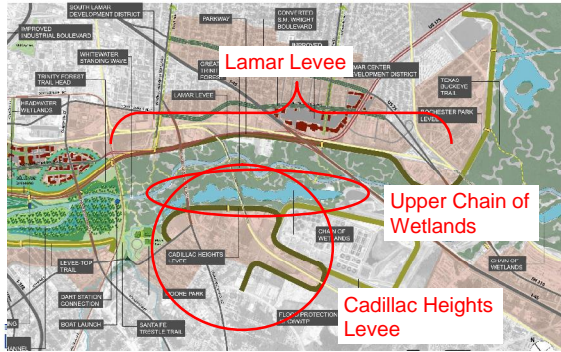


Access from Joppa into wetlands area (end of Fellows Ln.)

Construction Bridge from Loop 12 to Cell G will remain as access point



## Flood Protection: Future Work



## Flood Protection: Next Steps



- Wetland plantings will begin for lower chain of wetlands later this year
- Upper chain of wetlands will begin construction in summer 2009, complete in summer 2011
- Levees will begin construction in early 2011, complete in late 2014



16

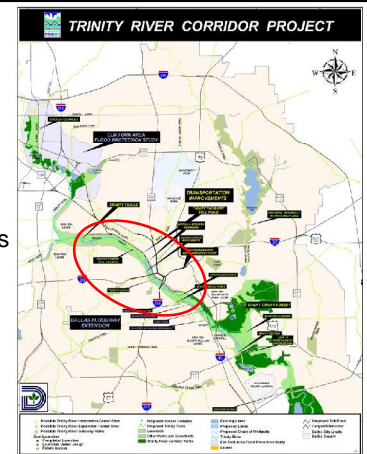
## Current Activities Recreation



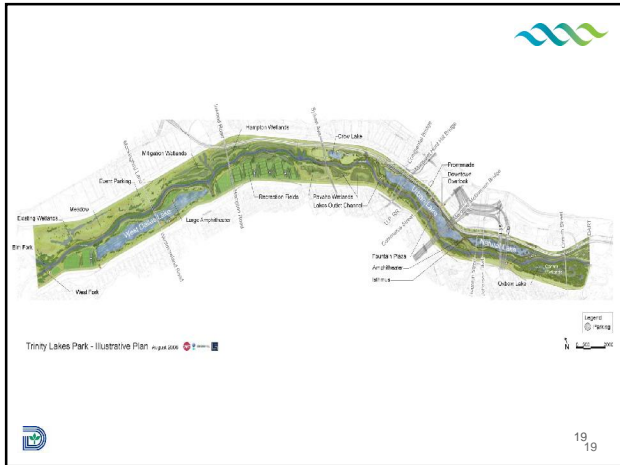
THE TRINITY  
DALLAS

## Lakes & Amenities

- Includes
  - River meanders
  - Trails
  - Amphitheaters
  - Gathering places
  - Picnic facilities
  - Wetlands
- Complete in 2014







### Recreation: The Great Trinity Forest

- 6,000 acres of bottomland hardwood forest
- Many bird and wildlife species

TRINITY RIVER CORRIDOR PROJECT

### Recreation: Moore Gateway Park

Great Trinity Forest: Moore Park Gateway

Located at 8<sup>th</sup> Street and Corinth, near the DART rail station

TRINITY RIVER CORRIDOR PROJECT

### Moore Park Gateway Phase I (complete May 2009)

Legend

- A - Grade Elevation
- B - Storm Water Drainage
- C - Storm Water Retention
- D - Pedestrian Path
- E - Bicycle Path
- F - Picnic Area
- G - Open Space
- H - Open Space
- I - Open Space
- J - Open Space
- K - Open Space
- L - Open Space
- M - Open Space
- N - Open Space
- O - Open Space
- P - Open Space
- Q - Open Space
- R - Open Space
- S - Open Space
- T - Open Space
- U - Open Space
- V - Open Space
- W - Open Space
- X - Open Space
- Y - Open Space
- Z - Open Space

Great Trinity Forest: Moore Park Gateway

Master: Plan Concept

TRINITY RIVER CORRIDOR PROJECT

### Moore Park Gateway Phase 2-4 (complete December 2010)

Legend

- A - Grade Elevation
- B - Storm Water Drainage
- C - Storm Water Retention
- D - Pedestrian Path
- E - Bicycle Path
- F - Picnic Area
- G - Open Space
- H - Open Space
- I - Open Space
- J - Open Space
- K - Open Space
- L - Open Space
- M - Open Space
- N - Open Space
- O - Open Space
- P - Open Space
- Q - Open Space
- R - Open Space
- S - Open Space
- T - Open Space
- U - Open Space
- V - Open Space
- W - Open Space
- X - Open Space
- Y - Open Space
- Z - Open Space

Great Trinity Forest: Moore Park Gateway

Master: Plan Concept

TRINITY RIVER CORRIDOR PROJECT

### Recreation: Santa Fe Trestle Trail

### Standing Wave Whitewater Course

TRINITY RIVER CORRIDOR PROJECT





## Recreation: Gateway Parks

Soft Surface Trails

Pavilion

Fishing Facilities

Parking

Loop 12 Boat Launch

31

## Recreation in South Dallas

Trinity Horse Park

TRINITY RIVER CORRIDOR PROJECT

32

## Recreation: Trinity River Audubon Center

South of Loop 12, east of IH-45

TRINITY RIVER CORRIDOR PROJECT

33

## Trinity River Audubon Center

Designed by renowned LEED (Leadership in Energy and Environmental Design) Architect Antoine Predock

34

## Trinity River Audubon Center

Grand Opening for the Public  
October 18-19, 2008

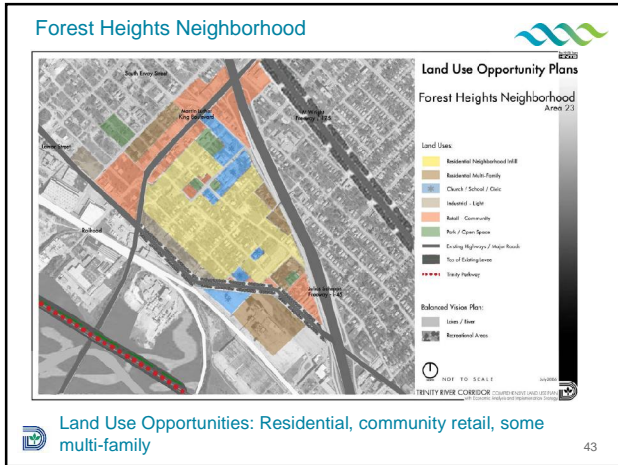
35

## Trinity River Audubon Center

36



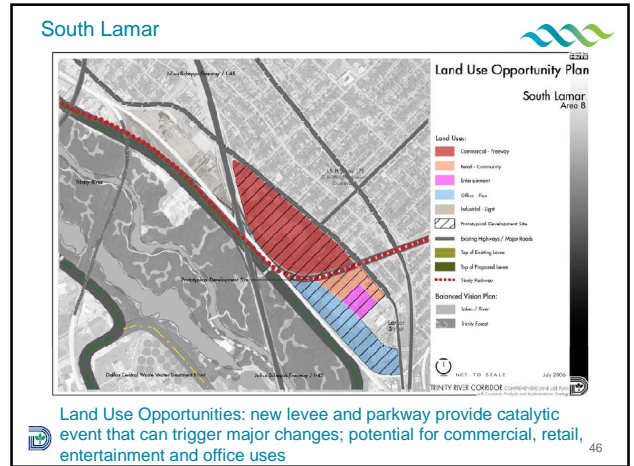
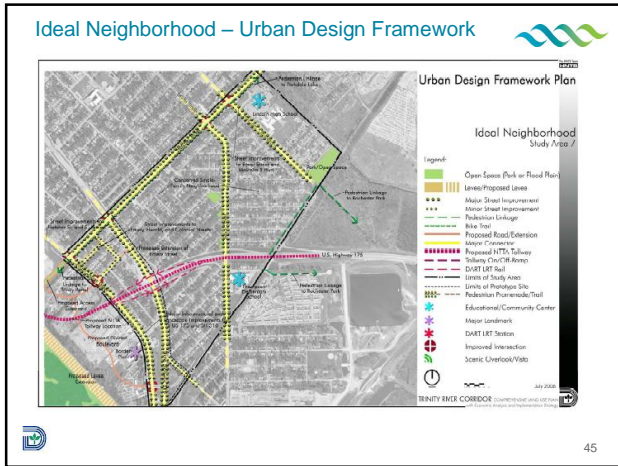




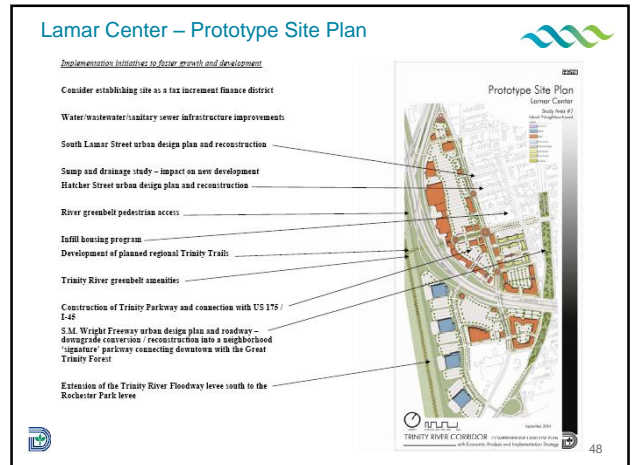
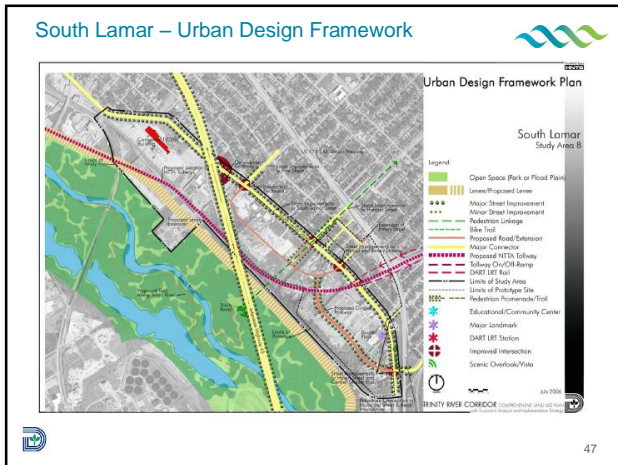
Land Use Opportunities: Residential, community retail, some multi-family



Land Use Opportunities: Residential (neighborhood infill), major highway changes create potential for office and community retail



Land Use Opportunities: new levee and parkway provide catalytic event that can trigger major changes; potential for commercial, retail, entertainment and office uses





## South Lamar Potential Development



49

## Transportation: Trinity Parkway Toll Road

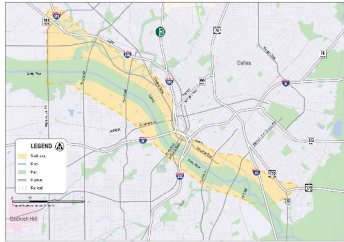


THE TRINITY  
DALLAS

## Trinity Parkway Overview

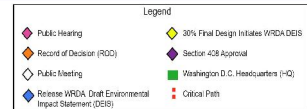
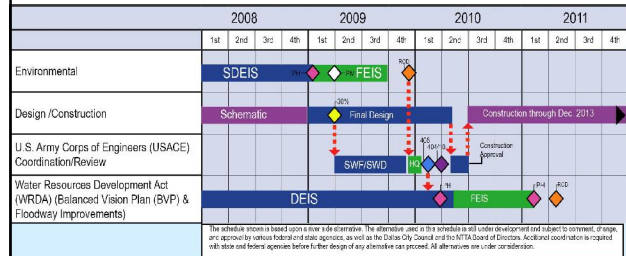


- Approximately nine miles (IH 35E/SH 183 to U.S. 175/SH 310)
- Eight SDEIS alternatives from \$1.1 to \$2.1 billion
- Schematic design of Alt. 3C proceeding at risk, with TxDOT and Regional Transportation Council support
- "Beat 2014" strategy
  - Begin construction mid-2010
  - Complete construction before 2014



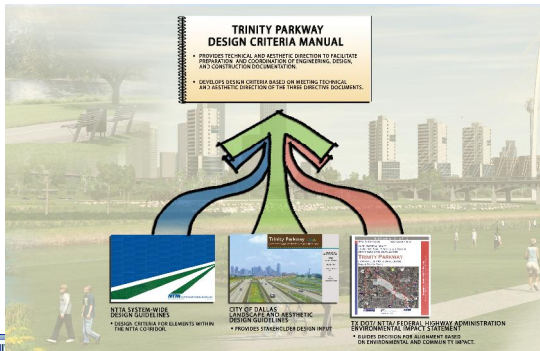
51

## Trinity Parkway Status



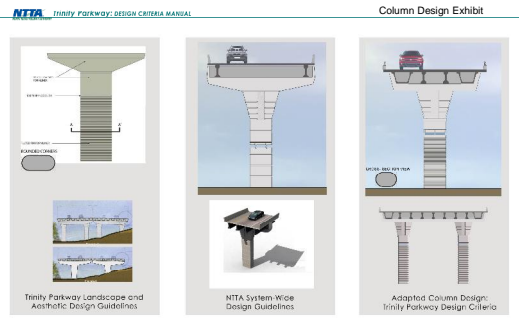
52

## Design Criteria Manual



53

## Design Criteria Manual



54





## South Trinity Gateway Zone



NTTA Trinity Parkway DESIGN CRITERIA MANUAL

Inventory / Analysis



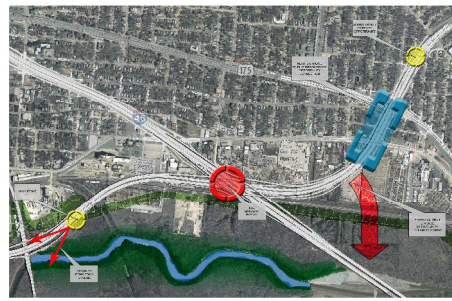
61

## South Trinity Gateway Zone



NTTA Trinity Parkway DESIGN CRITERIA MANUAL

Opportunities



62

## Conceptual Lighting Plan



- The NTTA's desire is to light the Trinity Parkway at entrance/exit ramps and frontage roads.

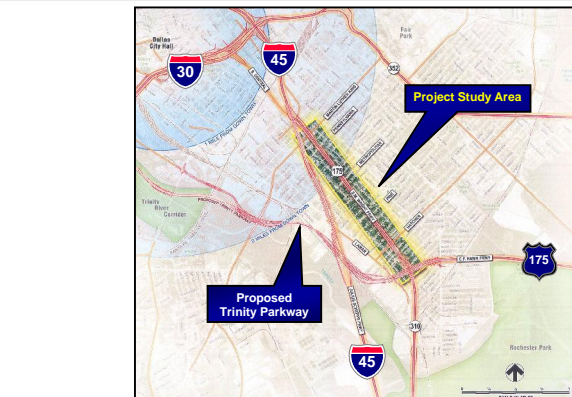


63

## Transportation: S.M. Wright Parkway

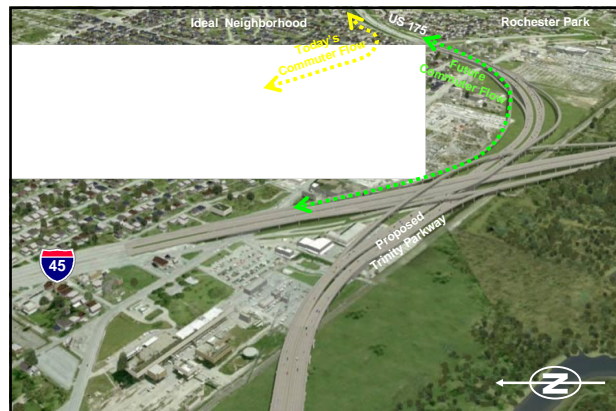


THE TRINITY  
DALLAS



## Project Location Map

65



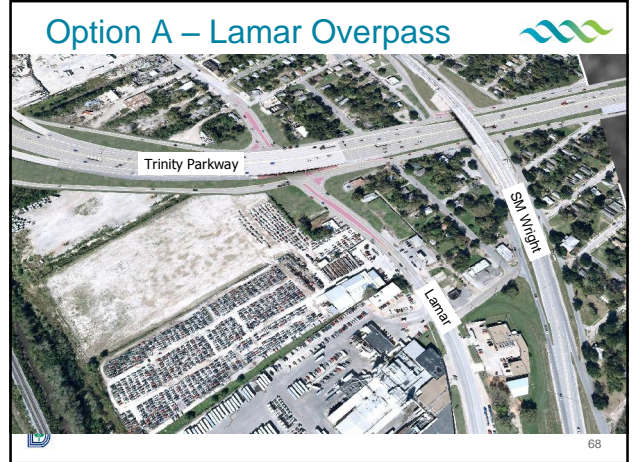
## Trinity Parkway Traffic

66

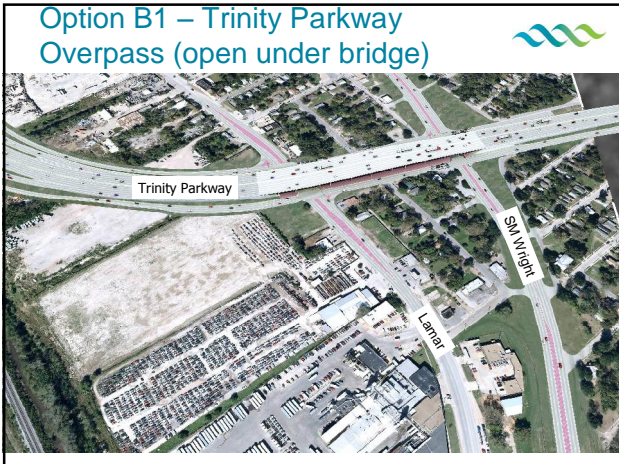




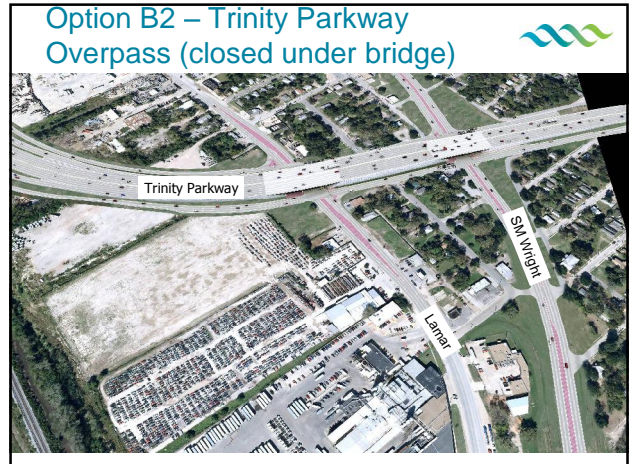
Existing SM Wright at CF Hawn



Option A – Lamar Overpass



Option B1 – Trinity Parkway Overpass (open under bridge)



Option B2 – Trinity Parkway Overpass (closed under bridge)

### South Trinity Gateway Zone

**NTTA Trinity Parkway: DESIGN CRITERIA MANUAL** Under Bridge Opportunities

HIGHWAY STRUCTURES CAN PROVIDE A VARIETY OF INNOVATIVE COMMUNITY SPACES FOR MULTIPLE USE: SPORT COURTS, NEIGHBORHOOD OPEN SPACES, WALKWAYS, SCULPTURE, ART SPACES, LIGHTING, GOLF PARKS, LANDSCAPING, SKATEPARKS.

### Trinity Parkway – S.M. Wright Parkway

**NTTA Trinity Parkway: DESIGN CRITERIA MANUAL** City of Dallas Future Land Use Plan

- Residential
- Commercial
- Office
- Retail
- Entertainment

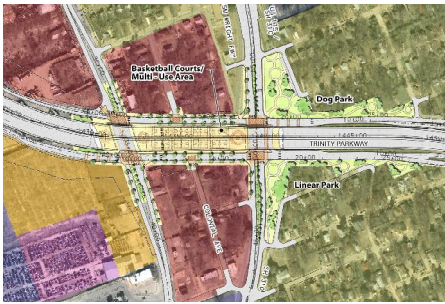


## Trinity Parkway – S.M. Wright Parkway



NTTA Trinity Parkway DESIGN CRITERIA MANUAL

City Of Dallas Opportunities Conceptual Plan



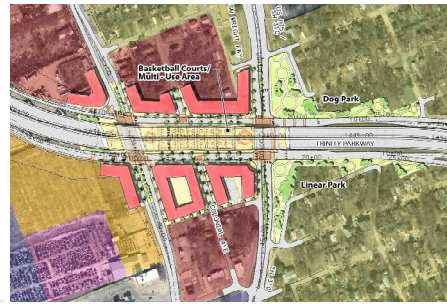
73

## Trinity Parkway – S.M. Wright Parkway



NTTA Trinity Parkway DESIGN CRITERIA MANUAL

City Of Dallas Opportunities Conceptual Plan



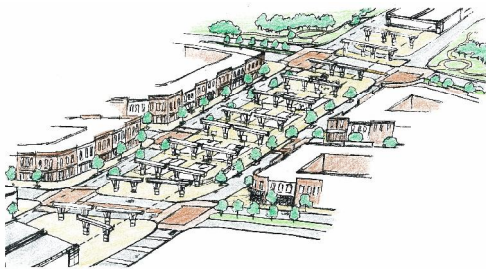
74

## Trinity Parkway – S.M. Wright Parkway



NTTA Trinity Parkway DESIGN CRITERIA MANUAL

City Of Dallas Opportunities Conceptual Plan



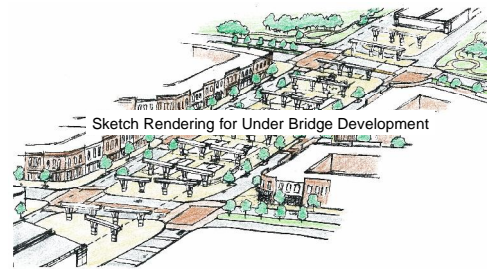
75

## Trinity Parkway – S.M. Wright Parkway



NTTA Trinity Parkway DESIGN CRITERIA MANUAL

City Of Dallas Opportunities Conceptual Plan



76

## Input needed!



- What is your preference for the intersection of Trinity Parkway and S.M. Wright Parkway?
  - Option A – Trinity Parkway over Lamar, under S.M. Wright Parkway
  - Option B1 – Trinity Parkway over Lamar, over S.M. Wright Parkway (open under bridge)
  - Option B2 – Trinity Parkway over Lamar, over S.M. Wright Parkway (closed under bridge)



77

## Frequently Asked Questions



## How will the Trinity Project improve my quality of life?



- Enhanced mobility
  - Trinity Parkway will provide easy access into and through downtown
  - S.M. Wright Parkway will have slower speeds, less traffic and pedestrian amenities
- Increased flood protection
  - Levees will protect from the 800 year flood event
  - Stormwater drainage improvements will prevent flooding outside the levees



79

## How will the Trinity Project improve my quality of life? (cont.)



- Family oriented Recreational Opportunities
  - Trails for hiking, biking, horseback riding
  - Park & picnic facilities
  - Birdwatching, nature activities



80

## Why do we need the levees and wetlands?



- The existing Dallas levees were originally built in the 1920's, raised to their current height in the 1960's
  - Levees stopped at the point of protecting low income, minority neighborhoods and businesses
  - Their height in the 60's was to protect from the 800 year flood
  - Flood protection has been reduced to 300 year protection due to upstream development and downstream forest growth
- Levees will provide 5 ½ miles more protection to Lamar and Cadillac Heights (to 800 year flood protection) and will increase existing Rochester levee protection to 800 year protection (from existing 110 year protection)
- Wetlands reduce flood levels by providing flood conveyance through the Great Trinity Forest



## Why do we need the Trinity Parkway?



- Dallas has one of the top 10 bottlenecks in the country through the Canyon/Mixmaster and lower Stemmons area
- Dallas is also in a non-attainment area with regard to ozone levels
- Trinity Parkway will carry 100,000 vehicles per day, and reduce ozone emissions by 84 tons per year
- Trinity Parkway allows for the reduced speed and enhanced design of SM Wright Parkway



82

## Will my property be affected?



- See the maps provided at this meeting
- If your property is shown to be affected, you will be contacted by City staff to initiate the acquisition process
- Individual properties are handled on a case-by-case basis (businesses, single family, renters, etc.)
- At a minimum, affected owners will receive:
  - Fair Market Value offer (not just DCAD value)
  - Relocation costs
  - Moving costs
- Property acquisition is in accordance with Federal Regulations
- City staff are here to answer your questions if you are affected



83

## How will the Trinity Parkway affect Economic Development in this area?



- Parkway and levee extension will "create" developable land along the Trinity River...the catalytic change that brings opportunity.
- Access and rooftops are keys to successful development.
- The above public improvements will set the stage.
- The City can help further by providing needed infrastructure and zoning to "entitle" desired development.
- The City and community should create a cohesive vision for each area.
- The City can further assist by providing:
  - Relocation alternatives for non-conforming uses
  - Economic development tools in the appropriate situation, or
  - Development packages to potential developers



84



Trinity River Project Office  
(214) 671-9500

[www.trinityrivercorridor.org](http://www.trinityrivercorridor.org)  
<ftp://ftp.dallascityhall.com>



THE TRINITY  
DALLAS