

US 175/SM WRIGHT DALLAS COUNTY

Project Overview Community
Meeting



WELCOME & INTRODUCTIONS

TxDOT Staff

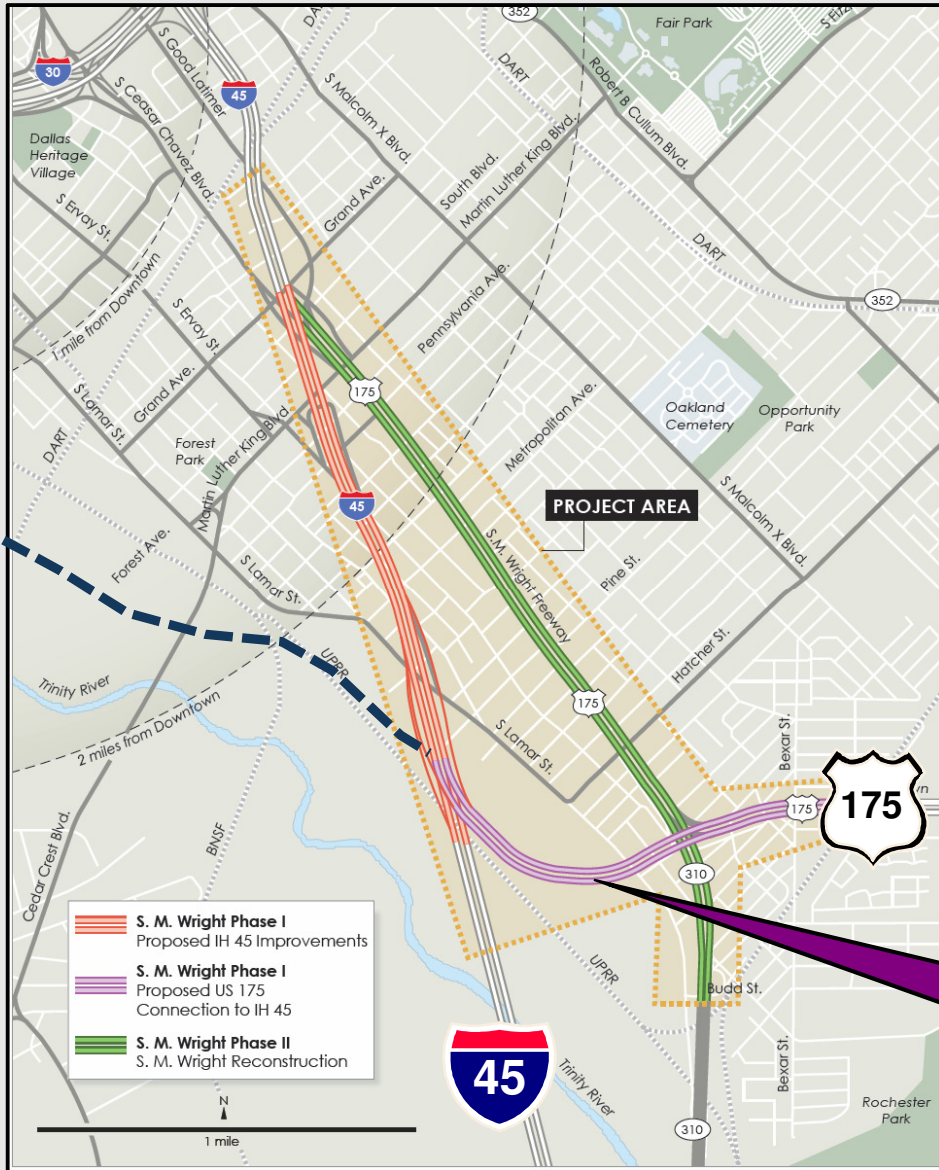
- Area Engineer: Noel Paramanantham, P.E.
- Assistant Area Engineer: Elliott Stovall, P.E.
- Project Engineer: Jason Mashell, P.E.
- Project Engineering Assistant: Jennifer Carpenter, E.I.T.
- Public Information Officer: Michelle Raglon

SM Wright General Project Information

▪ **Project Information**

- US 175 From IH 45 to East of Bexar Street
- Project Scope
 - Construction of freeway facility and direct connectors
 - Roadway, Bridges, TCP, Retaining Walls, Drainage, Traffic, Etc.
- Letting: February 2016
- Construction Time: 819 Working Days
- Contractor: Webber, LLC
- Construction Cost: \$103,886,639.99

Project Overview

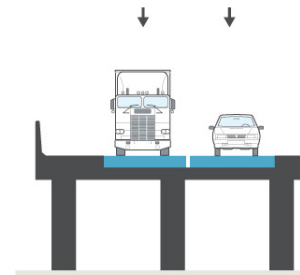


Phase I

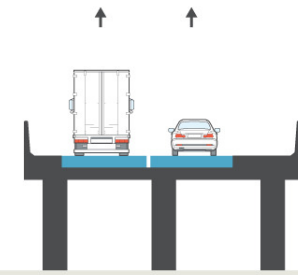
- New direct connecting ramps between US 175 CF Hawn Freeway and I-45

PROPOSED DIRECT CONNECTORS

NB Direct Connect Ramp



SB Direct Connect Ramp



TxDOT graphic

Phase I: US 175 to I-45 Connection

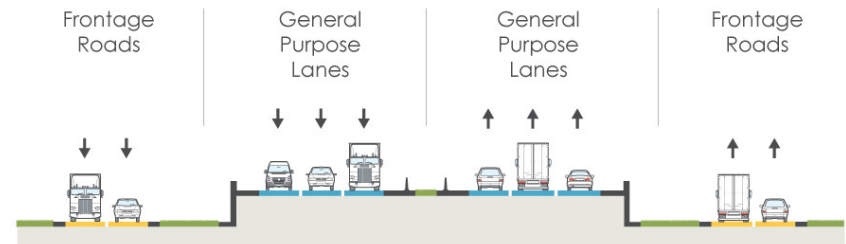
Project Overview



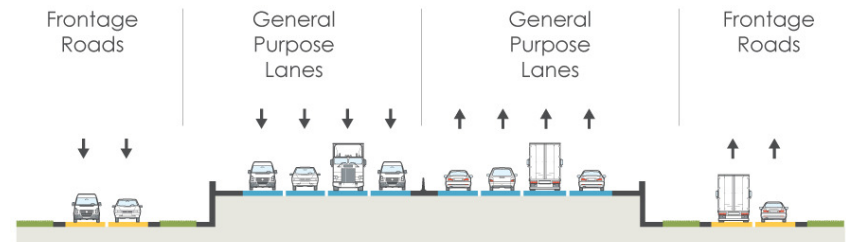
Phase I

- Provides lane balance on I-45 to facilitate new direct connecting CF Hawn ramps

EXISTING TYPICAL



PROPOSED TYPICAL



TxDOT graphic

FIRST 60 DAYS OF CONSTRUCTION

First 60 Days of Construction Will Include The Following:

- Bridge Construction
 - Drill Shafts, Footings, Columns at IH 45

- Roadway Construction
 - Pavement work along IH 45, SH 310, US 175 and Lamar Street
 - Traffic on IH 45 will continue to have three lanes in each direction but with reduced lane widths

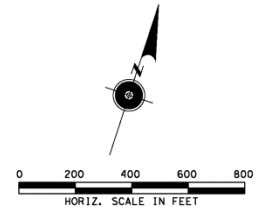
- Local Street Closures
 - Frontage Road access to SH 310 will be closed at the following streets:
 - Haven Street, Colonial Ave, Faye Street, Starks Ave.

LOCAL STREET CLOSURES

PLOT DRIVER\814\BAKER\11\BWP\DWG\11\CFH.dwg
 PENTABLE: 128912\SMW\Light\Phase#1.dwg

SCALE: 1:398.989
 USER: Corry, C | ley

FILE: \\N:\CP\Baker\SMW\11\CFH-1-0.dwg
 DATE: 10/13/2015 TIME: 16:32:39 PM



- LEGEND**
- WORK AREAS PREVIOUS PHASES
 - WORK AREAS THIS PHASE
 - TEMPORARY WORK AREAS THIS PHASE
 - TRAFFIC ON NEW PAVEMENT
 - TRAFFIC ON EXISTING PAVEMENT

NOTES:
 1. MAINTAIN ALL DETOURS AS SHOWN ON DETOUR SHEETS 073, 075 & 076 THROUGHOUT THIS PHASE OF WORK.

F-2677

NO.	DATE	REVISION	APPROVED

Texas Department of Transportation
 © 2014

Baker Michael Baker Jr., Inc.
 2221 East Lamar Blvd, Suite 600
 Arlington, TX 76006
 TBPE Registration No. F-2677

US 175
TRAFFIC CONTROL LAYOUT
 SM WRIGHT/CF HAWN
 PHASE 1 STAGES 1 & 2

SHEET 1 OF 1 SHEETS			
DESIGNED	FIG. NO.	FEDERAL AID PROJECT NO.	HIGHWAY NO.
BAS	6	SEE TITLE SHEET	US 175
CHECKED	STATE	DIST.	COUNTY
	TEXAS	DAL	DALLAS
	CONTROL	SECTION	JOB
	0197	02	122, ETC.

CONCLUSION

If any questions arise during the course of the project, here's TxDOT Contact Information:

TxDot Project Engineer: Jason Mashell, P.E.

Jason.Mashell@txdot.gov

214-320-4446

Public Information: Michelle Raglon

Michelle.Raglon@txdot.gov

214-320-4483

Visit: keepitmovingdallas.com

Any Questions??