

# Proposed SM Wright Project on IH 45 / US 175 / SH 310 Open House Public Meeting



Dallas District

Half Associates  
Baker Consulting Associates

August 7, 2012



- Why is this project needed?
- What is the process?
- How has the community been involved?
- What is being studied?
- Next Steps



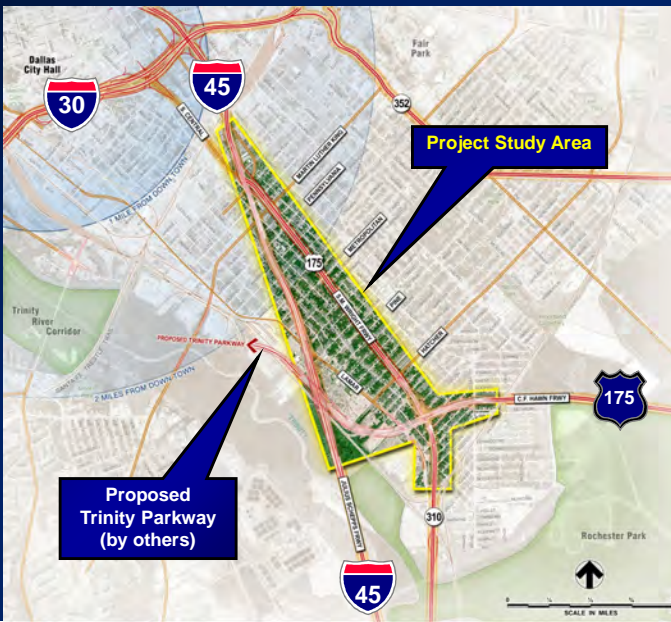
## Agenda



# Project Need & Overview




To develop concepts for the SM Wright Project with a focus on increased safety through removing the CF Hawn to SM Wright bend, improved mobility and efficiency, while enhancing community connectivity and aesthetics.






# SM Wright Project Scope






- Current 6-Lane freeway & frontage roads serve over 82,000 vehicles per day (vpd).
- Diversion to I-45 and Trinity Parkway reduces SM Wright traffic to about 50,000 vpd.
- Traffic reduction no longer needs freeway or bridges on SM Wright.
- Remaining local & through traffic volume requires only 6-lane signalized arterial.
- No added (new) right-of-way is anticipated for SM Wright. ROW is anticipated for US 175 connection to IH 45.

## SM Wright Fundamentals










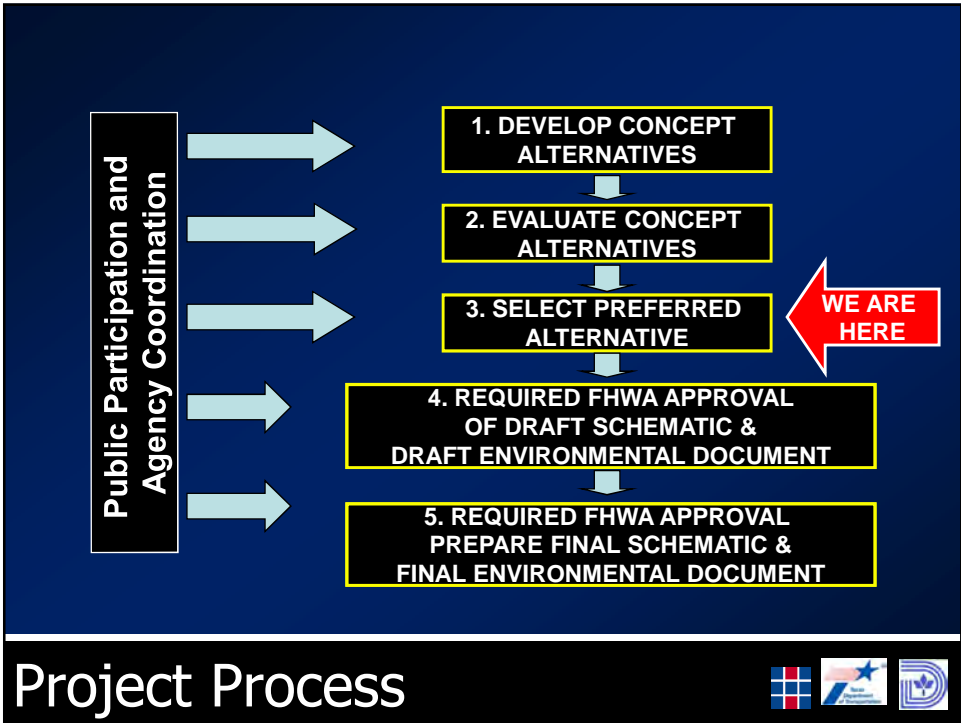

**Proposed Project Concept**

- Add direct connecting ramps between US 175 CF Hawn Freeway & IH 45
- Improve IH 45 capacity to facilitate new direct connecting CF Hawn ramps
- Provide access between CF Hawn & SM Wright through a grade separated interchange
- Convert SM Wright to a low speed, signalized, pedestrian-friendly, landscaped arterial
- Spacing provided to allow proposed Trinity Parkway connection and extension

## This Project's Traffic Flow

# Project Process



# Community Involvement



**Adjacent Neighborhood Associations**

South Boulevard/Park Row Historic District	Queen City Neighborhood Association
Wendelkin/Driscoll Neighborhood Association	Forest Heights Neighborhood Association
Ideal Neighborhood Association	

**Nonprofit Organizations**

SouthFair Community Development Corporation	Forest Heights Neighborhood Development Corp.
Clean South Dallas	Dallas Black Chamber of Commerce
Innercity Community Development Corp.	T. R. Hoover CDC

**Other Key Stakeholders**

New Hope Baptist Church	Greater New Zion Baptist Church
Peoples Missionary Baptist Church	Grace & Mercy Missionary Baptist Church
South Dallas Baptist Church	St. Philip's School and Community Center
South Dallas Nursing Home	Major commercial property owners

**Public Agencies**

NTTA	Dallas Housing Authority
DART	City of Dallas (PW & T, PARD, DPD)
TxDOT	MLK, Jr. Elementary School (DISD)
NCTCOG	H.S. Thompson Elementary School (DISD)

## Invited Community Participants



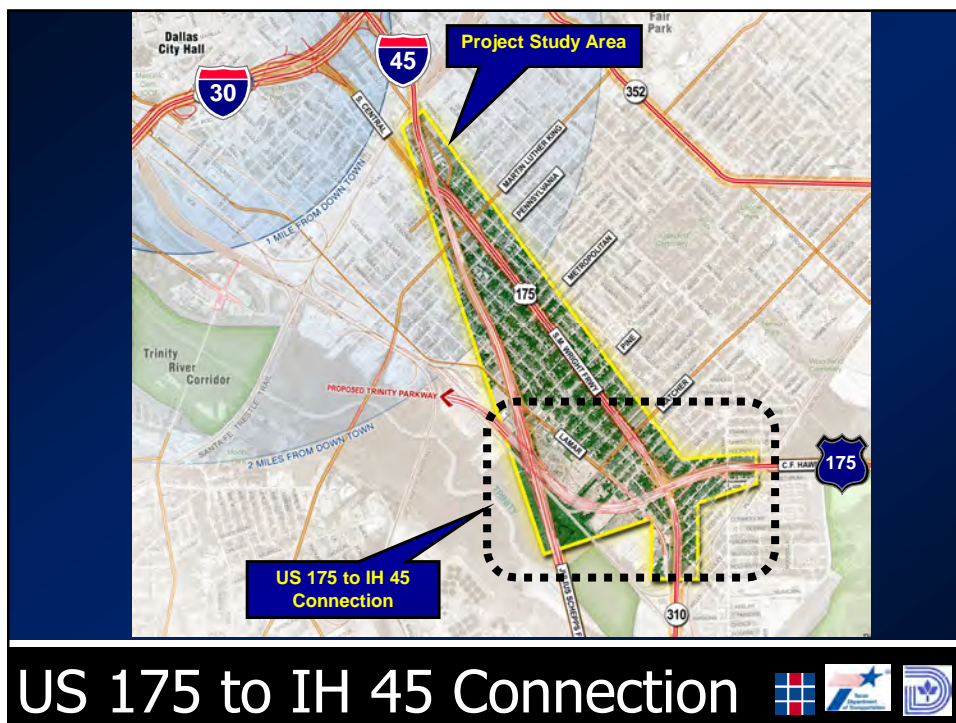
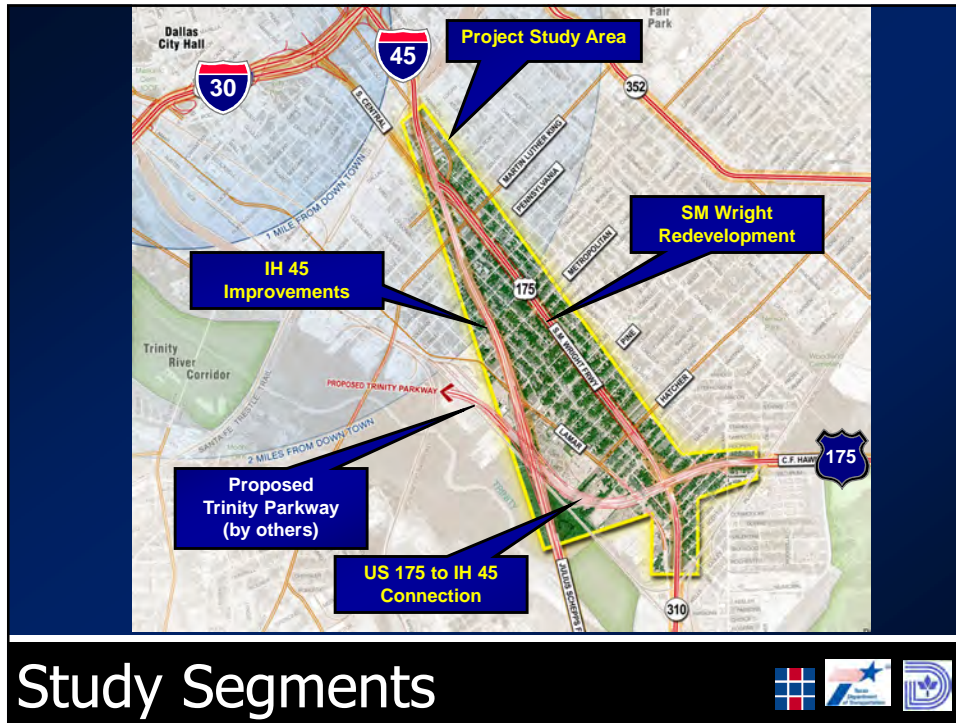

- Dallas Council **Trinity River Committee Briefing** - February 5, 2008
- SM Wright Project **1<sup>st</sup> Stakeholder** Work Group Meeting – Mar. 31, 2008
- SM Wright Project **2<sup>nd</sup> Stakeholder** Work Group Meeting – Sept. 9, 2008
- City of **Dallas Public Meeting** hosted by Councilmember Davis – Oct. 14, 2008
- SM Wright Project **3<sup>rd</sup> Stakeholder** Work Group Meeting – Dec 9, 2008
- SM Wright Project **4<sup>th</sup> Stakeholder** Work Group Meeting – Jan. 13, 2009
- Dallas Council **Trinity River Committee Briefing** - April 21, 2009
- SM Wright **TxDOT Public Meeting** – April 28, 2009
- Trinity Pkwy **NTTA Public Hearing** – May 5, 2009
- SM Wright Project **Elected Officials Briefing** – March 8, 2010
- SM Wright Project **TxDOT Public Meeting** – March 30, 2010
- SM Wright Project **Dallas Elected Officials Briefings** – May 23, July 13, Sept. 29, and Dec. 12, 2011 and June 25, 2012
- Trinity Pkwy **NTTA Public Hearing** – May 8, 2012
- SM Wright Project **5<sup>th</sup> Stakeholder** Work Group Meeting – July 30, 2012
- SM Wright Project **TxDOT Public Meeting** – August 7, 2012

## Community Involvement



## What is Being Studied?

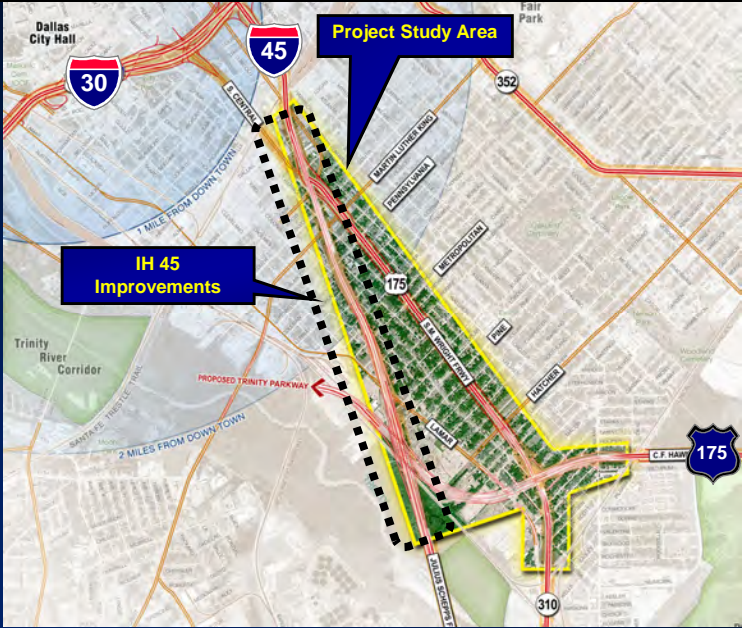






**Goal** – Increase safety by removing the freeway curve at CF Hawn Fwy and SM Wright Fwy.  
**This Project** – Build new freeway to freeway ramps from CF Hawn to IH 45 with widening of IH 45. Design to provide room to not preclude a connection of proposed Trinity Parkway (by others) to CF Hawn Fwy.

## US 175 to IH 45 Connection



**Project Study Area**

**IH 45 Improvements**

Dallas City Hall


Trinity River Corridor

PROPOSED TRINITY PARKWAY

1 MILE FROM DOWNTOWN

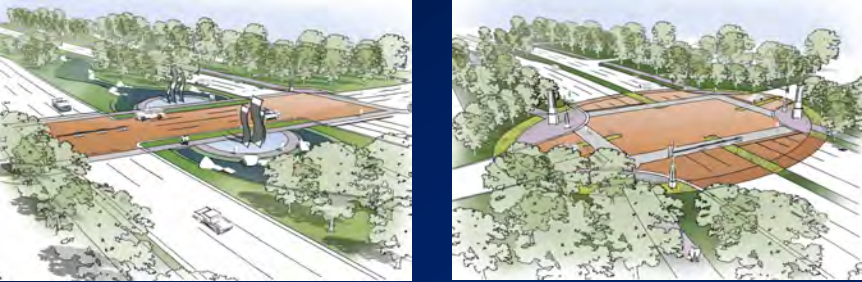
2 MILES FROM DOWNTOWN

## IH 45 Improvements











**Water Feature**                      **Intersection Enhancement**



**SM WRIGHT REDEVELOPMENT – SEE GRAPHICS ON DISPLAY**

## Concept Enhancement Plan



### S.M. Wright Project

*2009 Preferred Alignment*

**Key Design Elements from 2009:**


- Meandering roadway alignment
- Gateway features
- Water feature
- Hike and bike trails
- Enhanced vehicular paving




**PROS**


- Enhanced buffers between adjacent neighborhoods and S.M. Wright
- Incorporated additional intersections for pedestrian crossings
- Allows for enlarging existing park space at Kimball Park

**CONS**

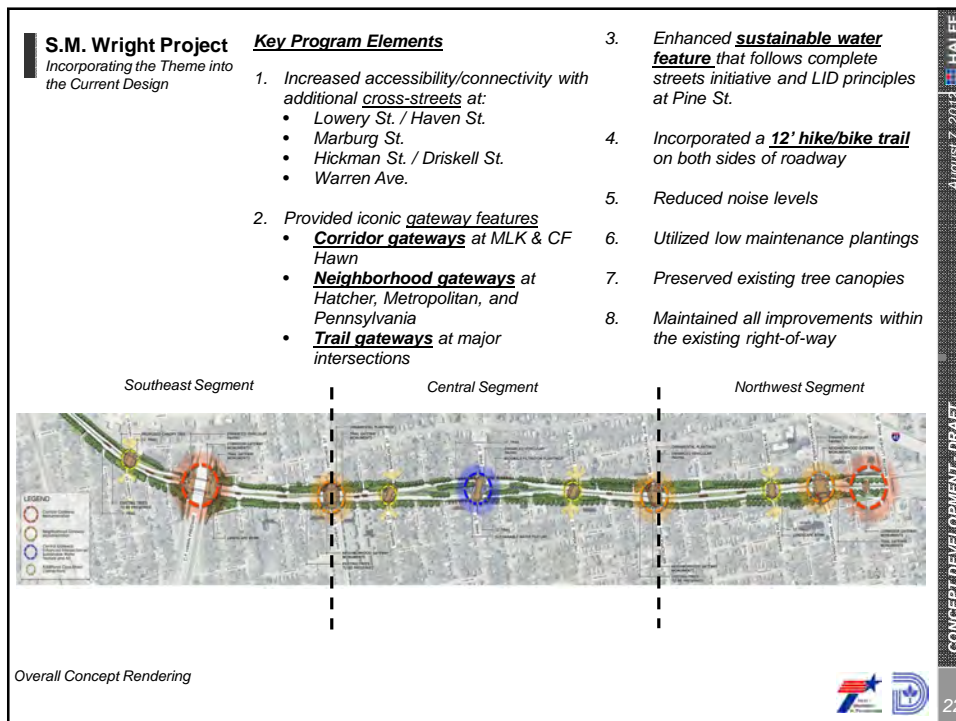
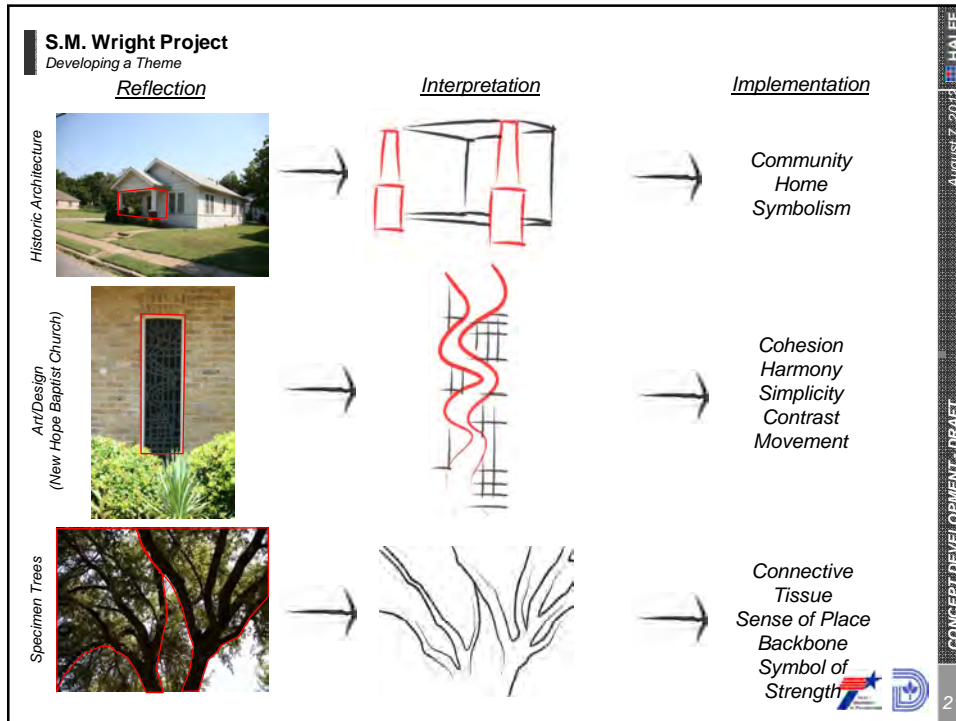
- Potential commercial development encroaches upon historic district
- Extensive enhancements may impact adjacent historic neighborhood context



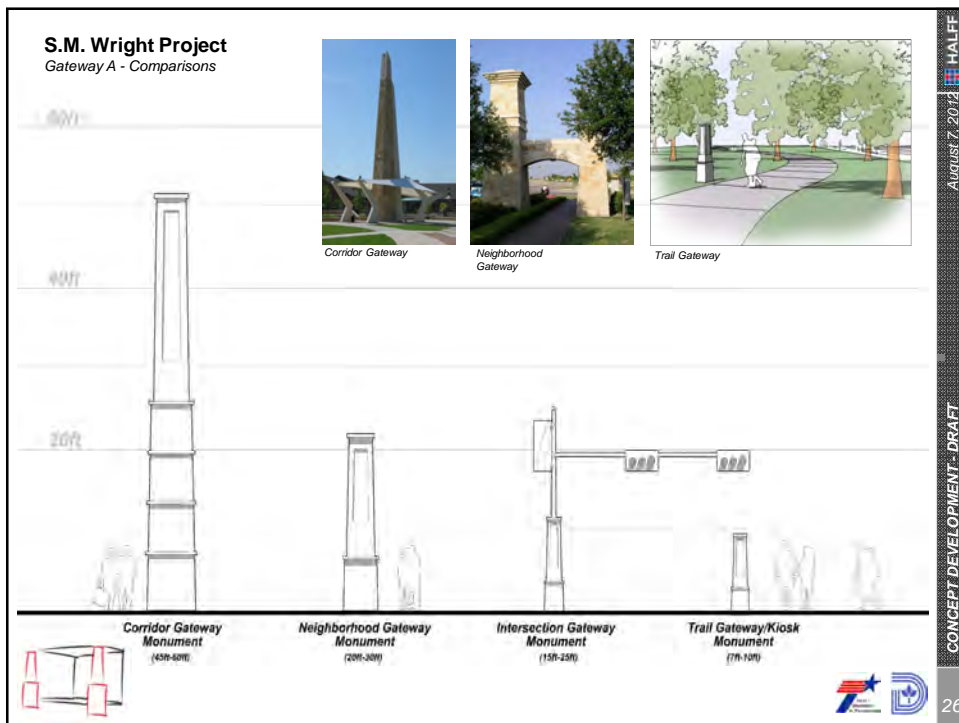
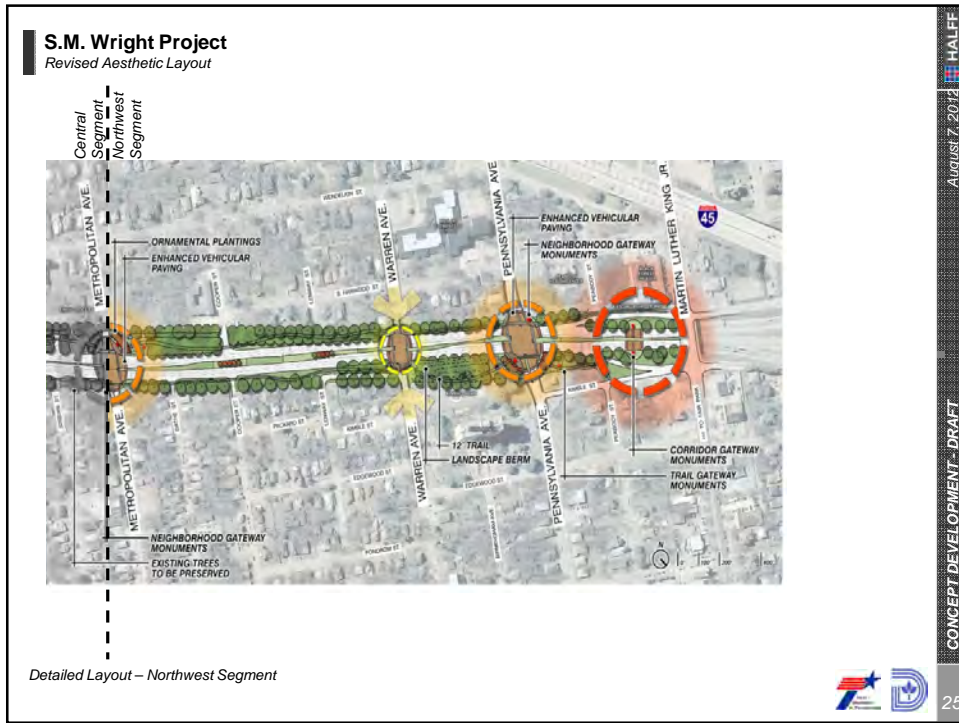




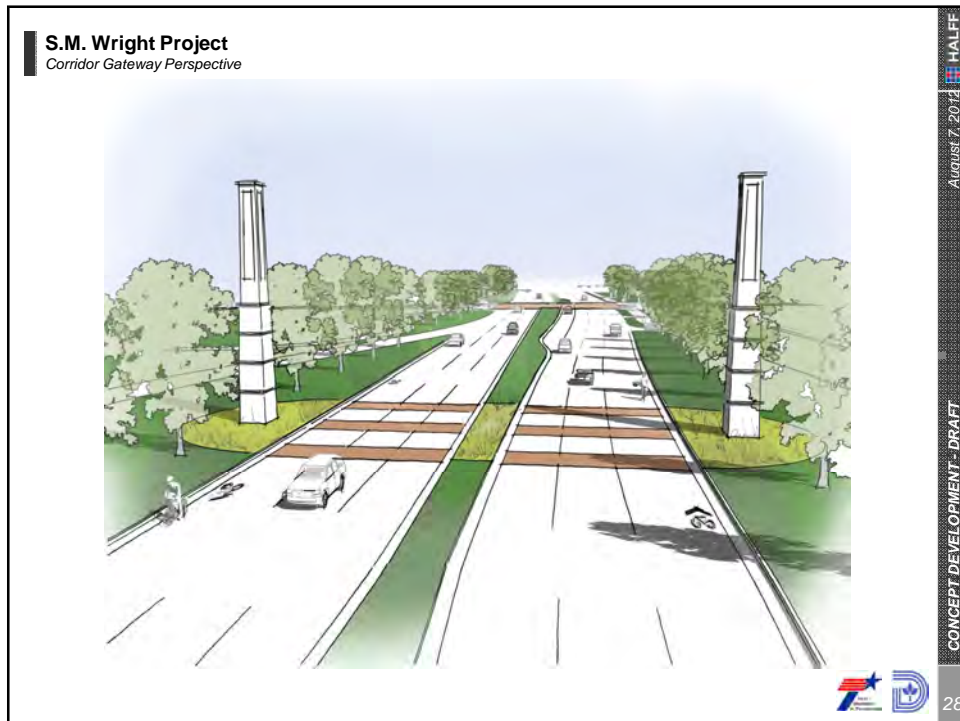
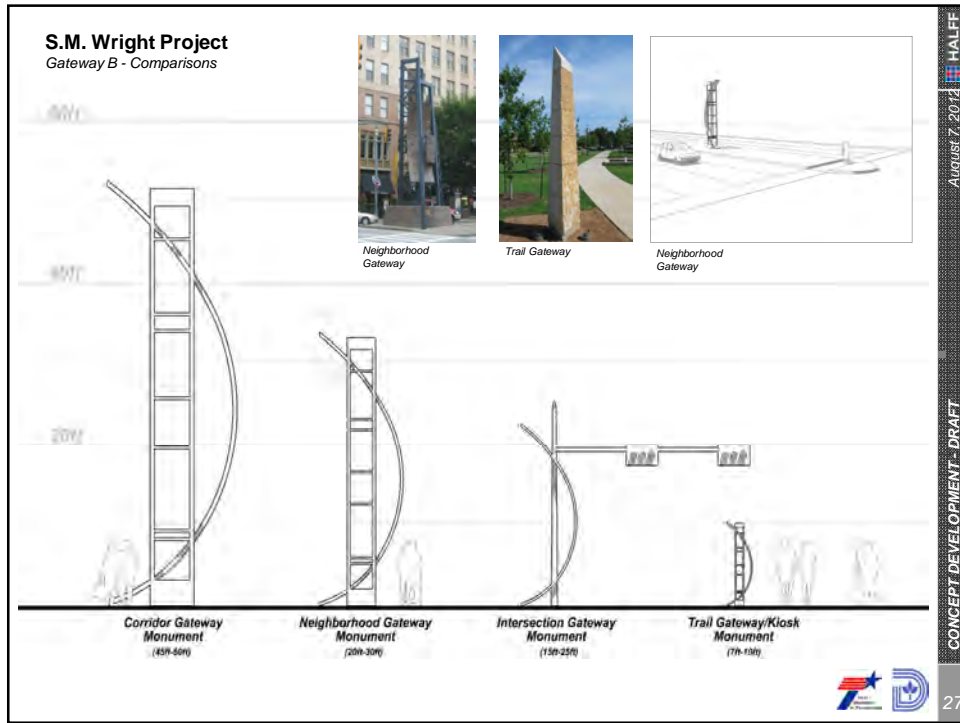


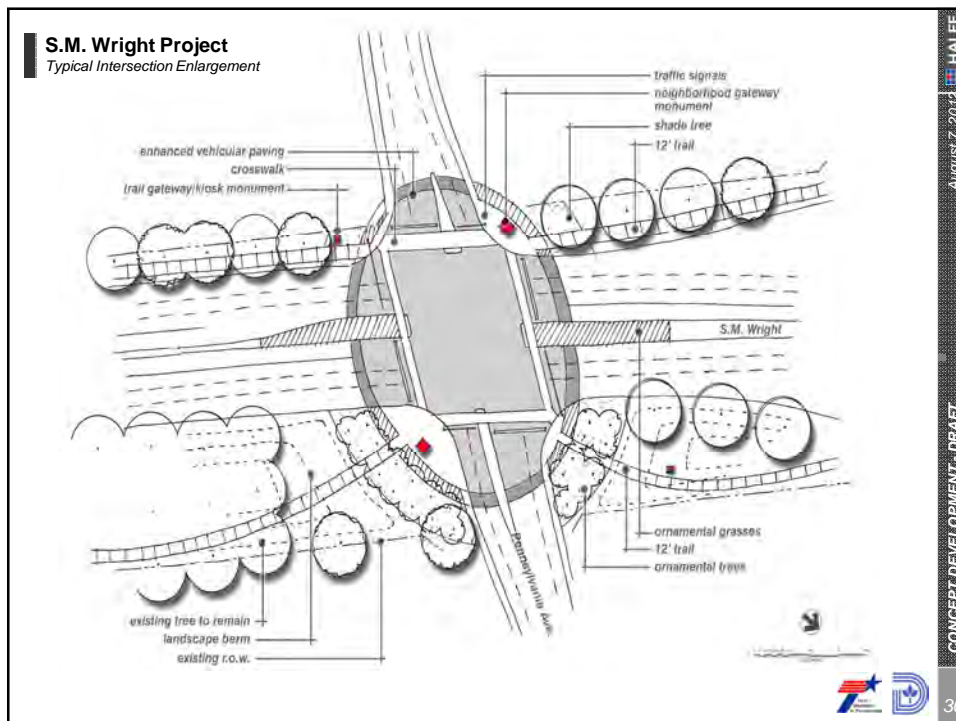
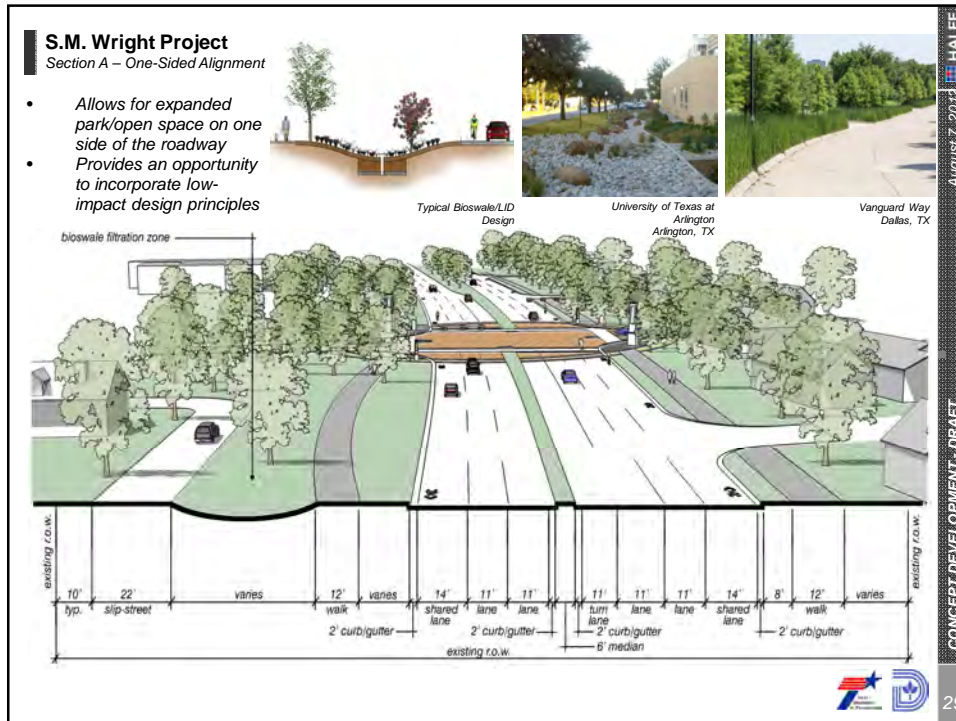
August 7, 2012 HALF-  
 CONCEPT DEVELOPMENT - DRAFT

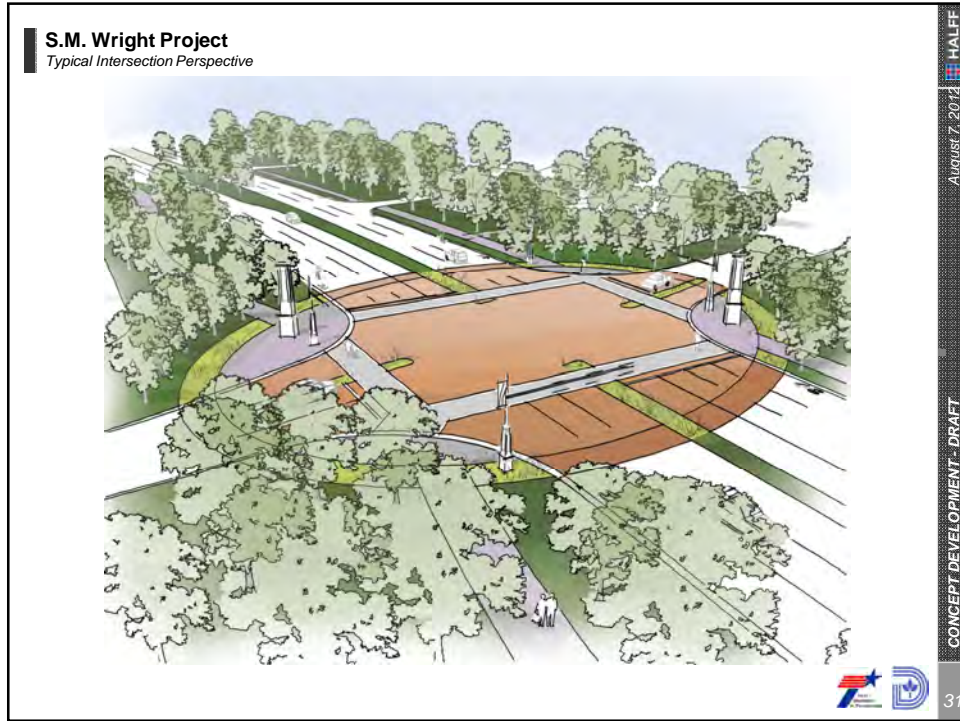












Detailed Layout - Central Segment



**S.M. Wright Project**  
Section B – Split Alignment

- Allows for expanded park/open space on with the median
- Provides an opportunity to incorporate low-impact design

Arlington Highlands Mall  
Arlington, TX

Botanic Gardens  
Denver, CO

Millennium Park  
Chicago, IL

water feature and bioswale filtration planting area

100'

existing 10.0'

33

CONCEPT DEVELOPMENT - DRAFT

August 7, 2012

HALFF

**S.M. Wright Project**  
Water Feature Perspective

34

CONCEPT DEVELOPMENT - DRAFT

August 7, 2012

HALFF

**S.M. Wright Project**  
Site Furnishings and Materials

**Benches**  
Source: Forms + Surfaces  
Source: Landscape Forms  
Source: Maglin  
Source: Maglin

**Trash Receptacles**  
Source: Victor Stanley  
Source: Landscape Forms  
Source: Maglin  
Source: Forms + Surfaces

**Bike Racks**  
Source: Landscape Forms  
Source: Fairbairn SF  
Source: Forms + Surfaces

**Vehicular Lighting**  
Source: Architectural Area Lighting  
Source: Kim Lighting Inc.  
Source: Forms + Surfaces  
Source: Elm Lighting Inc.

**Pedestrian Lighting**  
Source: Hess Lighting  
Source: Lameo Lighting  
Source: Architectural Area Lighting  
Source: Landscape Forms

**Enhanced Paving**  
Stamped and Colored Concrete  
Source: Pavers  
Stone Pavers

August 7, 2012 HALF-  
CONCEPT DEVELOPMENT - DRAFT  
35

**S.M. Wright Project**  
Plant Material

**Canopy Trees**  
Red Cypress  
Live Oak  
Shumard Oak  
Cedar Elm

**Understory Trees**  
Rose Redbud  
Desert Willow  
Southern Wax Myrtle  
Poinsettia

**Evergreen Trees**  
Yucca Holly  
Alpha Pine  
Cherry Laurel  
Zaneriah Holly

**Shrubs**  
Beard Sage  
Tom Juniper  
Abelia  
Red Yucca

**Ornamental Grasses**  
Arago Miscanthus  
Mexican Feather Grass  
Duff Mully  
Indiangrass

**Perennials**  
Plumbago  
Gregg's Salvia  
Russian Sage  
Lantana

**Groundcover/Vines**  
Monkey Grass  
Purple Wisteria  
Coral Honeysuckle

**Turf Grasses**  
Buffalograss  
Bermuda Grass  
Annual Ryegrass

August 7, 2012 HALF-  
CONCEPT DEVELOPMENT - DRAFT  
36

- S.M. Wright Project Schematic & Environmental Review & Approval – 6 month process
- S.M. Wright Public Hearing – November 2012
- FHWA Approval (anticipated) – January 2013
- S.M. Wright Project Phase 1 Construction – 2014-2016 (Dependent on Approvals)
- S.M. Wright Project Phase 2 Construction – 2017-2019 (Dependent on Approvals)
- Adjacent Corridor Redevelopment (City of Dallas) - Ongoing



## Next Steps



Nasser Askari, P.E.  
TxDOT Project Manager

Texas Department of Transportation  
4777 E. Highway 80  
Mesquite, Texas 75150  
Phone: 214-320-6100  
Fax: 214-320-4470

Or visit the project web site at:  
[www.smwrightproject.org](http://www.smwrightproject.org)

## For More Information...

